

# **Counting Working-Age People With Disabilities: What Current Data Tell Us and Options for Improvement**

Andrew J. Houtenville, Ph.D.  
New Editions Consulting, Inc.

# Edited Volume

## Counting Working-Age People with Disabilities

What Current Data Tell Us and Options for Improvement



Andrew J. Houtenville, David C. Stapleton,  
Robert R. Weathers II, and Richard V. Burkhauser, editors

Thanks to NIDRR  
and David Keer!

# Voluminous Data

---

## **Major National Household Surveys**

American Community Survey  
Current Population Survey

National Health Interview Survey  
Survey of Income and Program Participation

---

## **Nat'l Household Surveys: Specific Topics**

American Housing Survey  
American Time Use Survey  
Behavioral Risk Factor Surveillance Survey  
Consumer Expenditure Survey

Medical Expenditure Panel Survey  
National Health and Nutrition Examination Survey  
Panel Study of Income Dynamics  
Survey of Consumer Finances

---

## **Surveys of Sub-Populations**

NHIS Survey–Disability Supplement  
National Longit. Svy. of Adolescent Health  
National Longitudinal Survey of Youth  
Health and Retirement Study

National Beneficiary Survey  
Medicare Current Beneficiary Survey  
Longitudinal Study of the VR Services Program

---

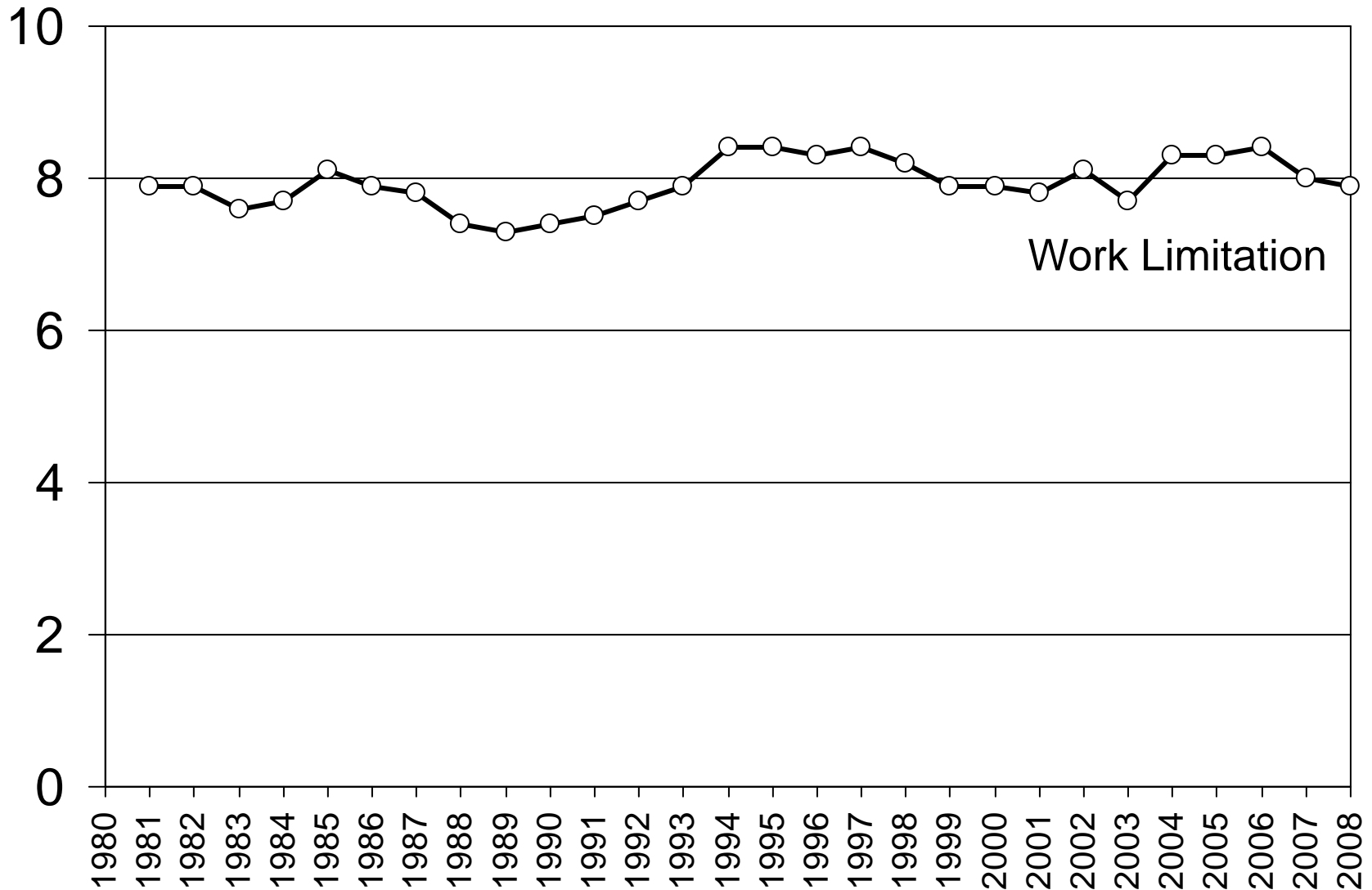
## **Administrative Data from Federal and Federal-State Programs**

SSA: Social Security Disability Insurance and Supplemental Security Income  
CMS: Medicare and Medicaid Enrollment and Claims  
RSA: State Vocational Rehabilitation Service Agency Closure Data

# Voluminous but Uncoordinated Data

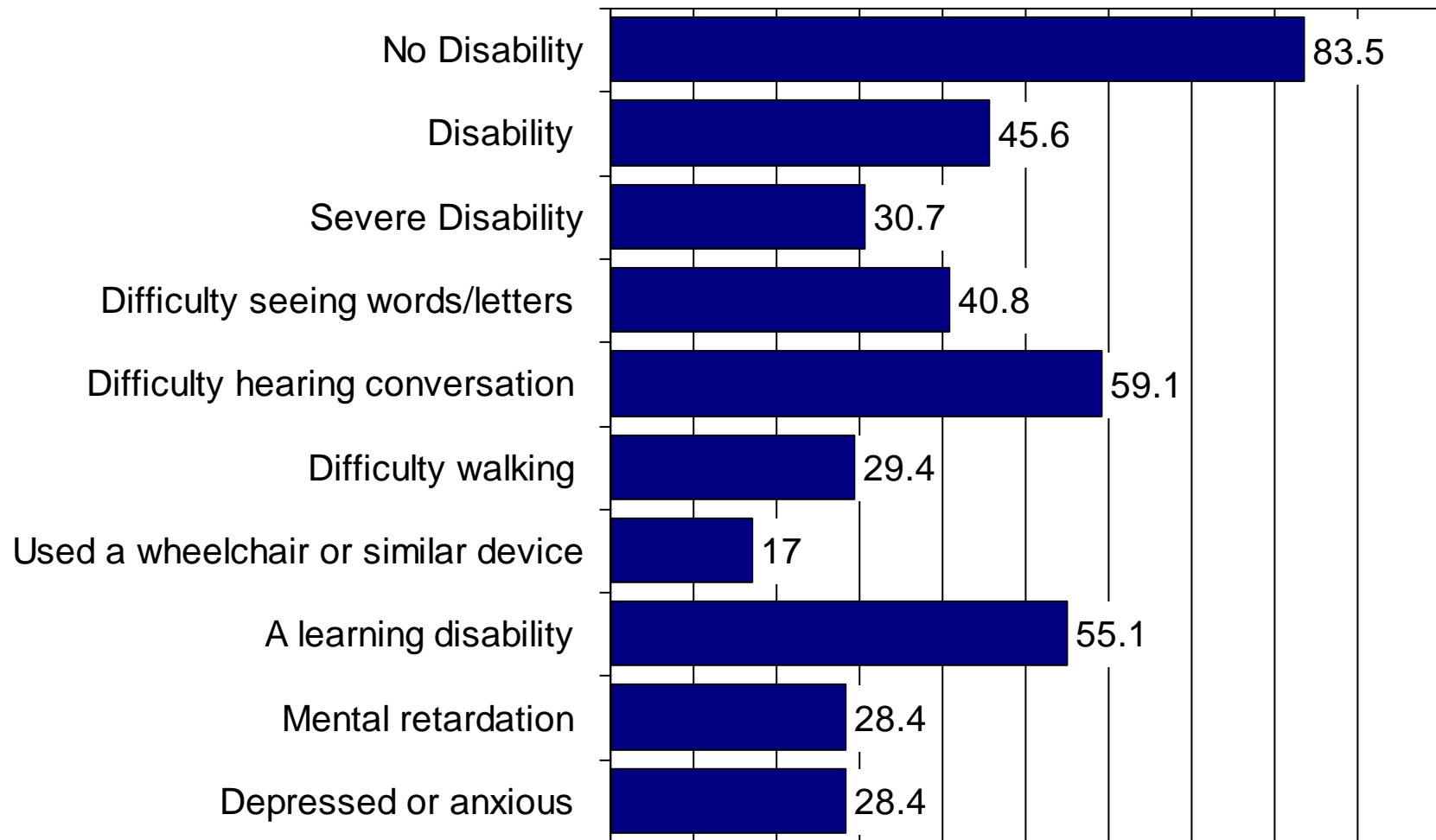
- Book Addresses
  - Survey and administrative data sources
  - Working-age population with disabilities
  - Will help you divining what data is available to address your research/policy questions.
  - Challenges and Improvement Options
- I'll overview the sources, and highlight their strengths.

## CPS-ASES: Trends: Prevalence Rate (Ages 21-64)

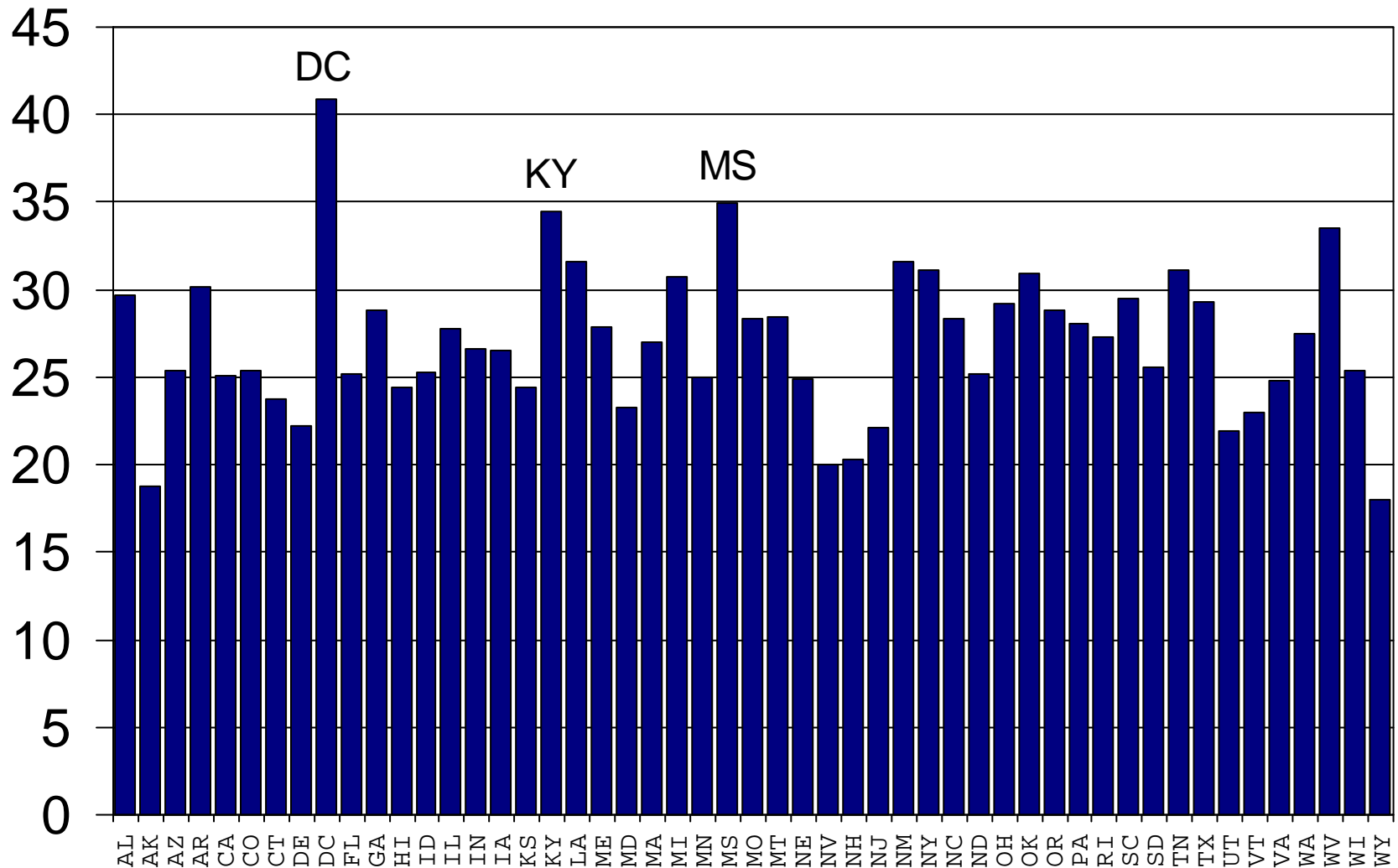


## SIPP: Disability Type: 2005 Employ. Rate (Ages 21-64)

Source: Brault, M. 2008. Americans with Disabilities: 2005. Current Population Report, P70-117, U.S. Census Bureau.

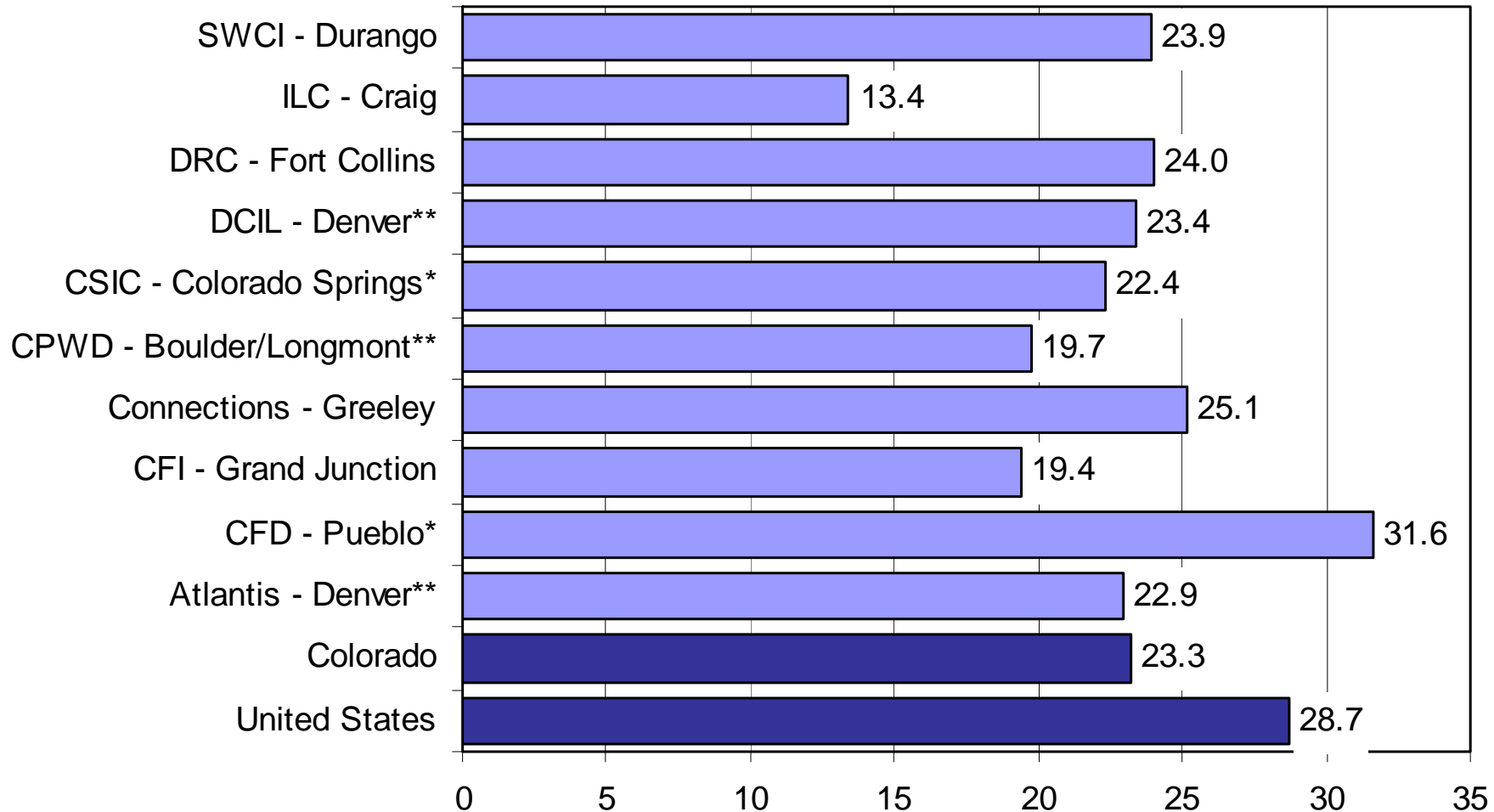


# ACS: State Level: 2007 Poverty Rates for PwD (Ages 21-64)



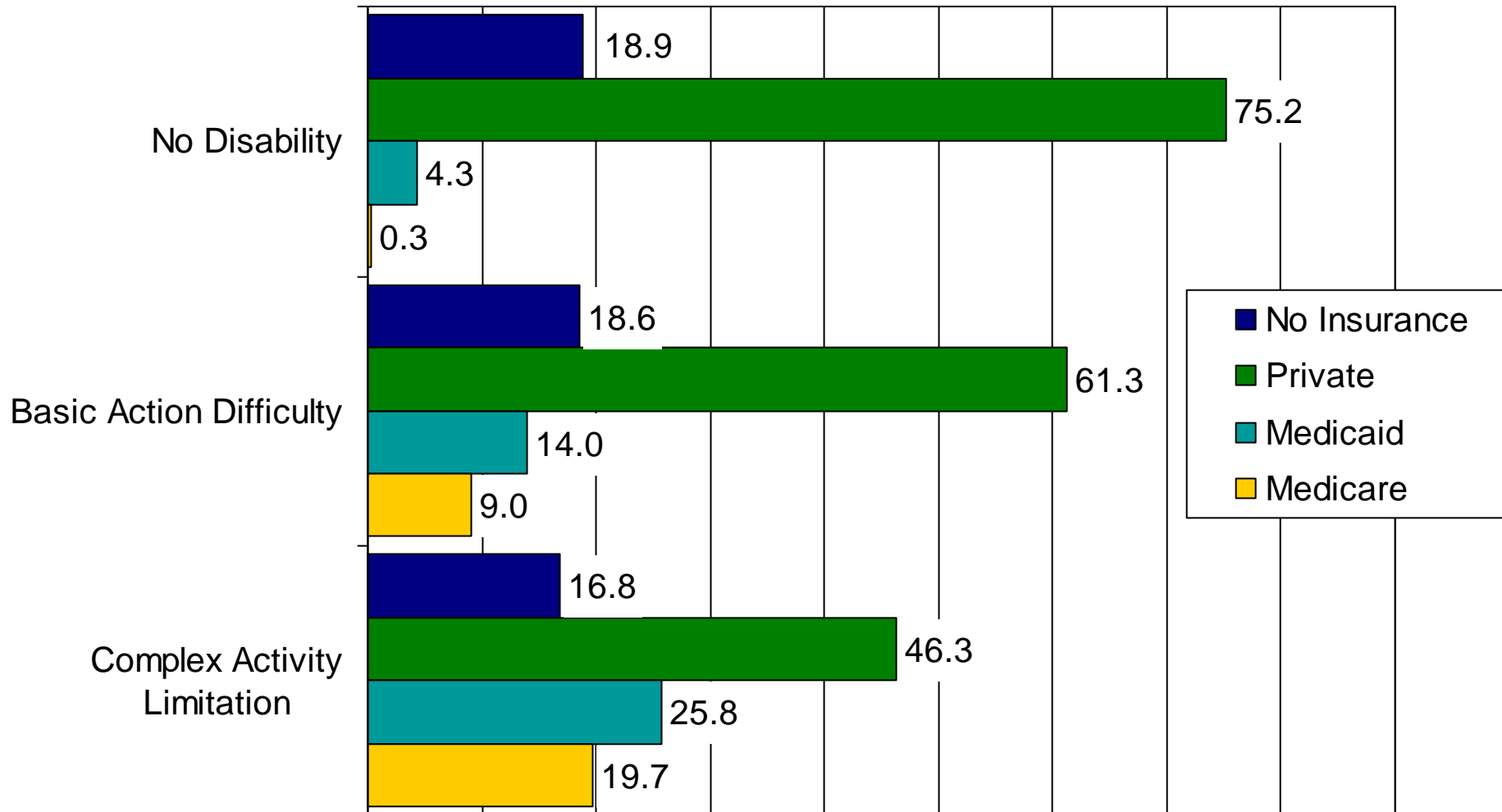
# ACS Pooled Estimates: Local Level:

## Poverty Rate of PwD (Ages 18-64, 2005-2007)



# NHIS: Health: Insurance Status (Ages 18-64)

Source: CDC. 2008. Disability and Health in the United States: 2001-2005. National Center for Health Statistics.



## Census 2000: Institution: Pop Size (Ages 18-64)

Source: Houtenville and Erickson (2005)

### **Persons with Sensory, Physical, Mental and/or Self-Care Disabilities (PUMS data)**

---

Residing in Housing Units	31,408,919
Residing in Institutional GQs	2,196,086
Residing in Non-Institutional	804,290

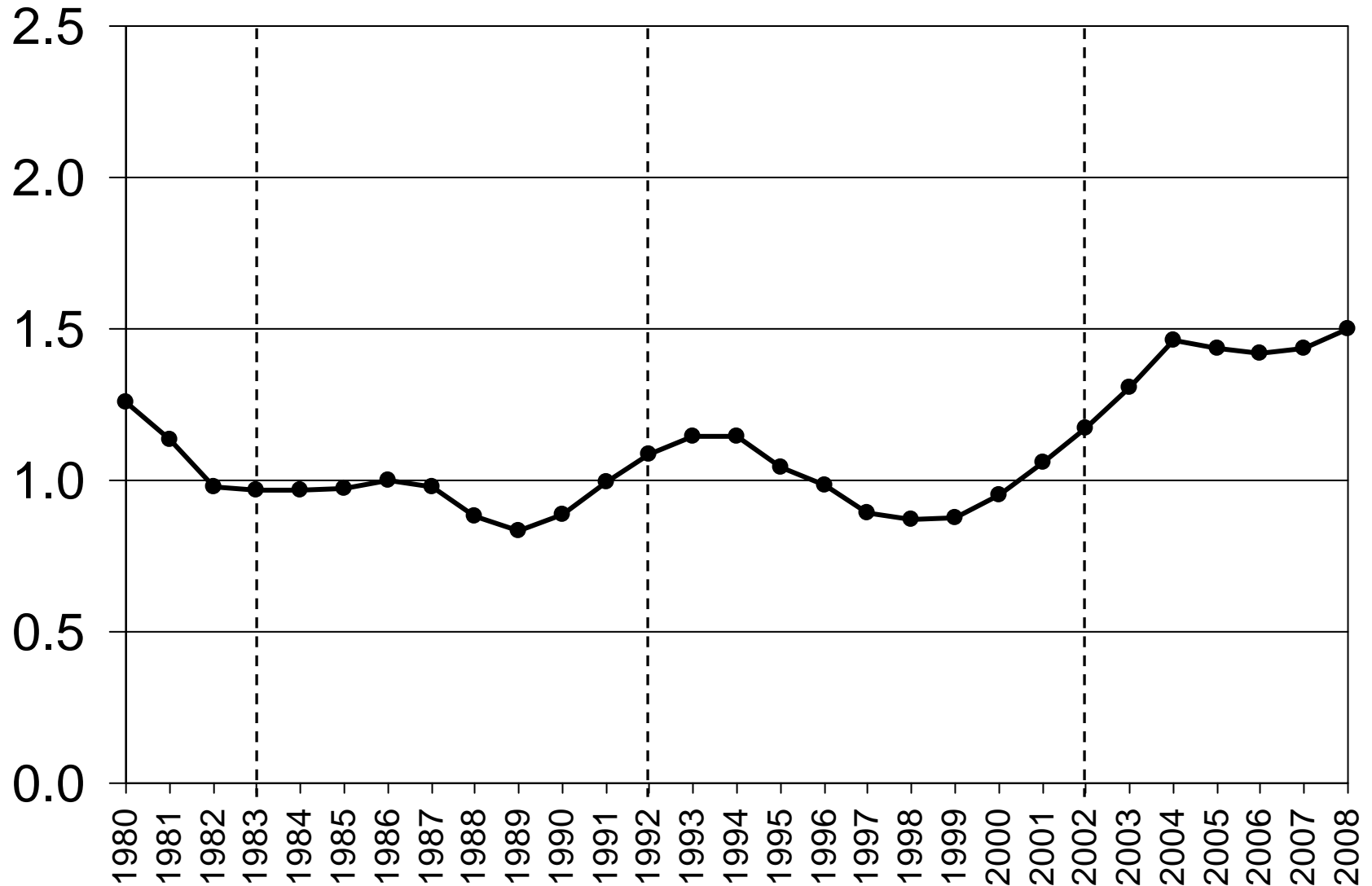
### **Persons Residing in Disability-Related GQs (summary data)**

---

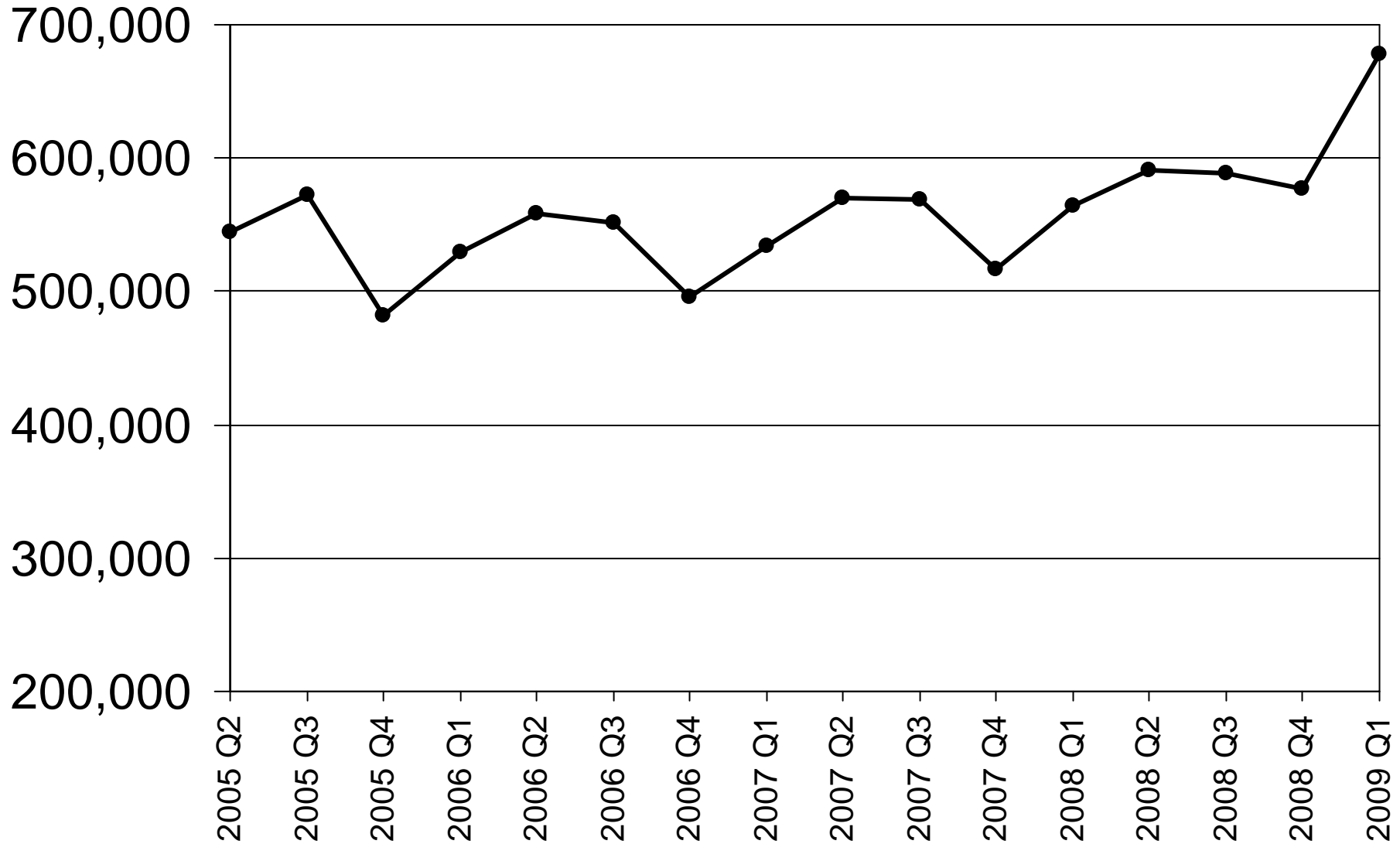
Institutional	213,504
Non-institutional	322,317

***Now Feasible in ACS***

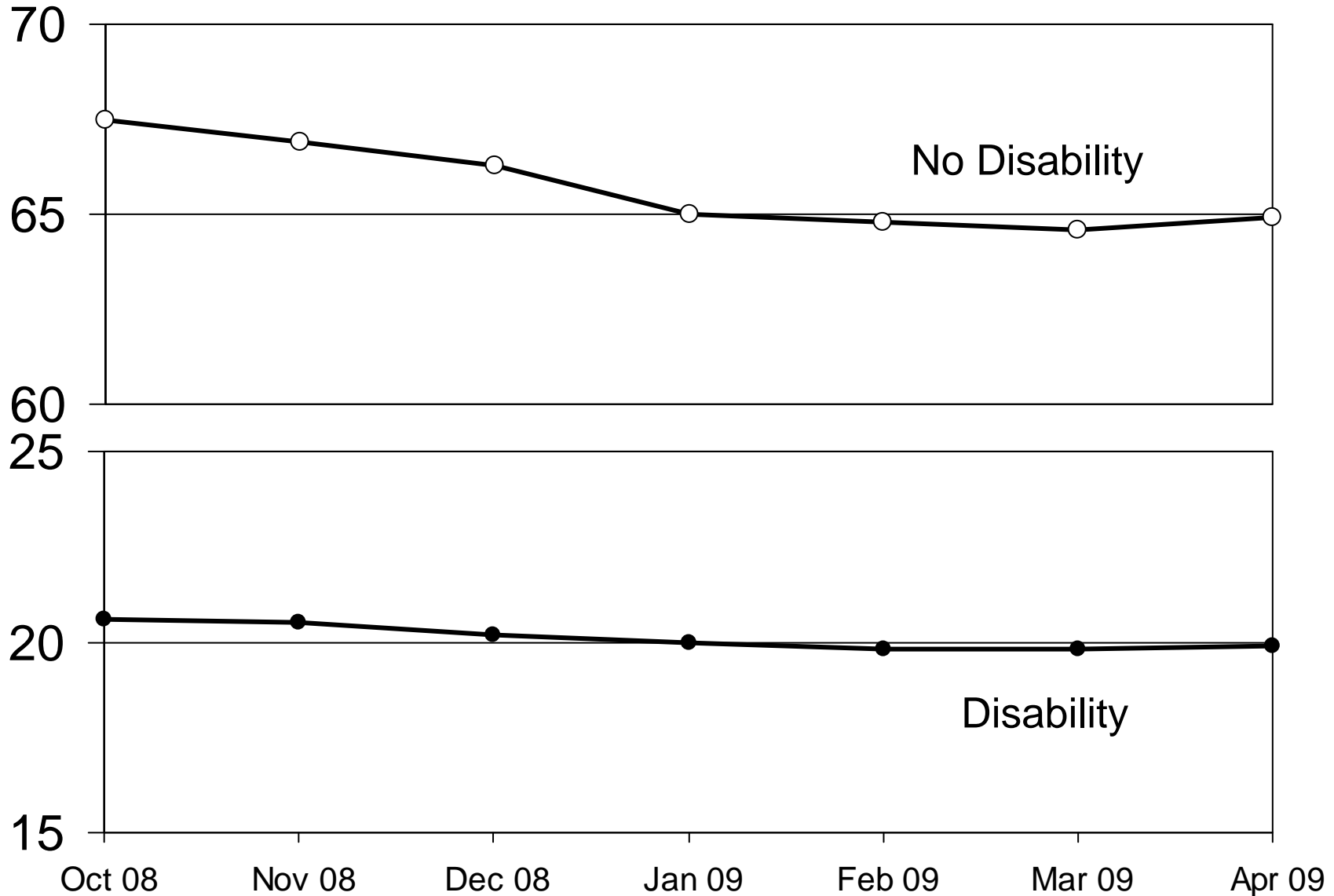
# SSA Data: DI Apps as % of Covered Workers



# SSA Data: Quarterly SSDI Applications



# Official BLS Statistic: Emp-to-Pop Ratio



## Other Issues

- Institution Data
- Data on Children
- Longitudinal Information
  - School-to-Work
  - Disability Onset and Return-to-Work

## Contact Information

Andrew J. Houtenville, Ph.D.

Senior Research Associate

New Editions Consulting, Inc.

6858 Old Dominion Drive, Suite 230

McLean, VA 22101

(703) 356-8035 Ext 123

[AHoutenville@NewEditions.net](mailto:AHoutenville@NewEditions.net)